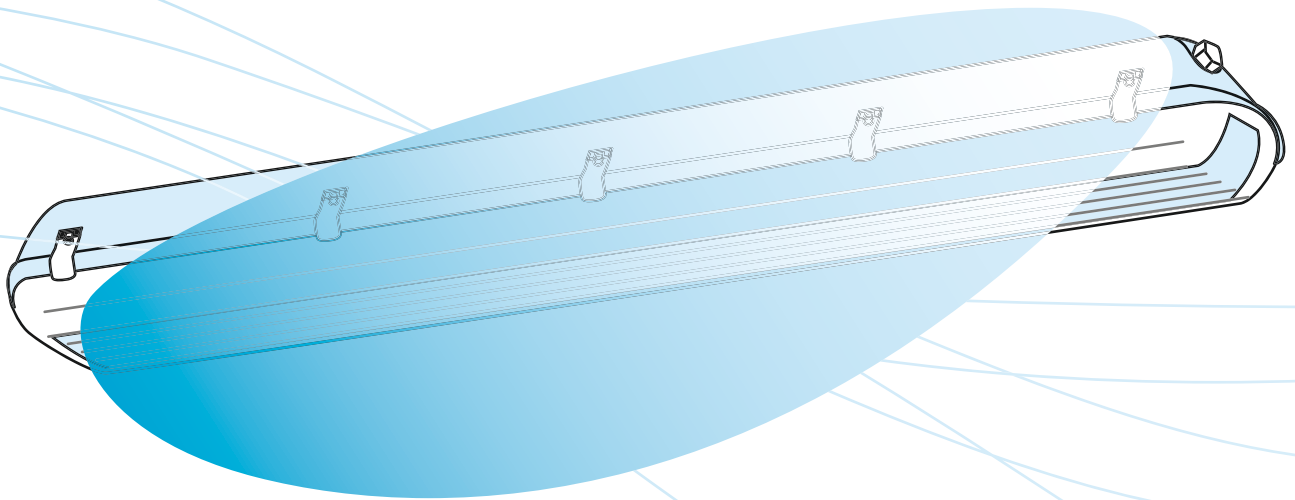




LED-LP-Waterproof luminaries for humid areas with diffuser

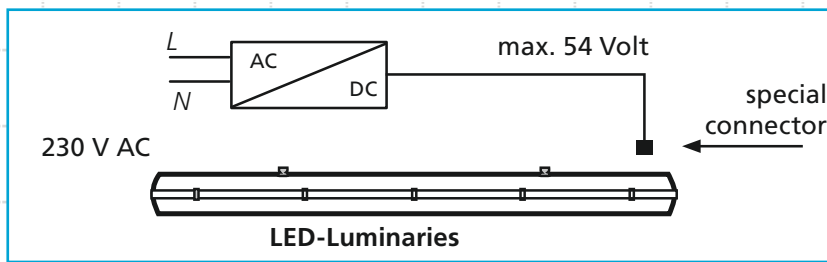
The LED-luminary is suitable for indoor and outdoor applications in industrial areas, sports fields, workshops, garages, agricultural buildings and halls.



The LED-Luminary contains LED-RE lamps and associated Power LED power supply. The components are replaceable. The LED-Luminary is equipped with flush-mounted clips for attaching a diffuser (cover). The polycarbonate housing is impact and heat resistant. The clips are made of metal. A polyurethane seal integrated into the LED-Luminary ensures IP 66 protection.

The LED-Luminary is resistant to dust, moisture and spray water. The cover has a shock resistance class of IK 08, which means that it is resistant to ball impacts. On request, the steel hooks can also be replaced by steel eyebolts.

Operation



Different versions of the LED-Luminaries are available. Power is provided by a separate Power LED power supply. In contrast to conventional luminaries with fluorescent tubes, there is no delay in switching on these lights. Brightness is thus available immediately when the unit is switched on. The start-up time that is familiar from conventional fluorescent tubes is avoided here, meaning that instantaneous lighting is provided.

The light emitted is flicker-free and thus presents no hazard to people who are sensitive to conventional fluorescent tubes. The LED-Luminary is insensitive to short switching intervals. Whereas standard fluorescent tubes are only economical in continuous operation, the LED-Luminary is also suitable for applications with frequent switching.

Technical Data LED-Luminaries

Model/Parameter	LED-WL-xF-LP-RE-600-Dxx			LED-WL-xF-LP-RE-1200-Dxx			LED-WL-xF-LP-RE-1500-Dxx		
Light source	measure [mm]		weight	measure [mm]		weight	measure [mm]		weight
	A	D		A	D		A	D	
Single tube	662	350	2,1 kg	1272	700	3,5 kg	1572	940	4,1 kg
double tube	662	350	3,1 kg	1272	700	4,7 kg	1572	940	5,7 kg
Diffusor / cover	PC-UV with high impact resistance structured plastic								
Diffusor / cover colour	milky								
Ambient temperature	-25°C bis +50°C								
Housing	Polykarbonat (PC-UV) and metal clips								
Housing colour	gray								
Seal	Polyurethan								
Illustration of the wet room LED-Luminary	<p>The illustration shows the LED-Luminary with dimensions. The main drawing shows the length A and the distance between clips D. Two side views show the diameters of 145 mm and 95 mm, and the heights of 100 mm and 111 mm.</p>								

Electric Installation **LED-Luminaries**

Model/Parameter		LED-WL-xF-LP-RE-600-Dxx	LED-WL-xF-LP-RE-1200-Dxx	LED-WL-xF-LP-RE-1500-Dxx
Supply voltage		220V to 240V		
Mains supply frequency		50Hz bis 60Hz		
Rated current	Single tube	0,19 A		
	Double tube	0,38 A		
Main connection		clip 3-pole, 1,0mm ² to 2,5mm ²		
Current consumption of Power LED power supply	Single tube	700 mA		
	Double tube	1x700 mA	2x700 mA	2x700 mA

Technical Data **LED-RE lamp**

Model/Parameter	LED-WL-xF-LP-RE-600-Dxx	LED-WL-xF-LP-RE-1200-Dxx	LED-WL-xF-LP-RE-1500-Dxx
LED-Type	Low Power LED		
Typical power consumption of an LED-RE lamp, in Watts	13	26	33
Single tube			
Typical power consumption of an LED-RE lamp, in Watts	26	33	65
Double tube			
LED-Lifetime	> 50.000 hours ¹⁾		

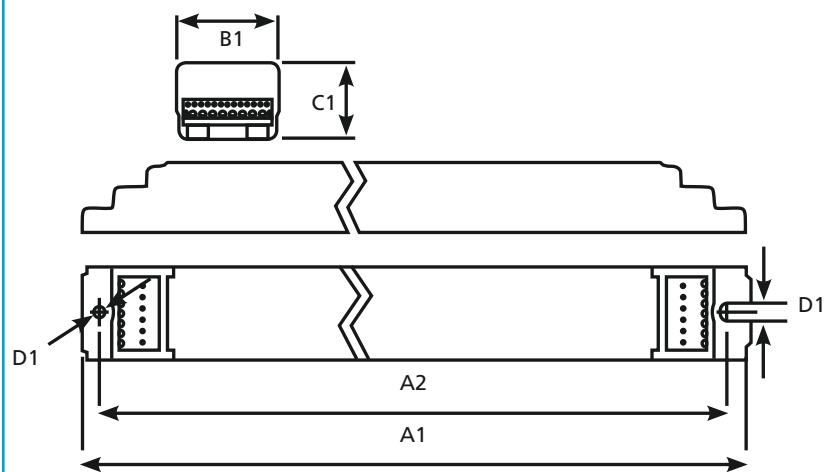
Optical properties **LED-RE lamp**

Model/Parameter	LED-WL-xF-LP-RE-600-Dxx	LED-WL-xF-LP-RE-1200-Dxx	LED-WL-xF-LP-RE-1500-Dxx	
Colour temperature	D40	neutralwhite 4000K		
	D50	coldwhite 5000K		
	D65	daywhite 6500K		
Colour rendering index	>80 CRI ²⁾			
Luminous flux (Lumen) Single tube ⁴⁾	D40	1900	3800	4800
	D50			
	D65			
Luminous flux (Lumen) Double tube ⁴⁾	D40	3800	7600	9600
	D50			
	D65			

Technical Data Power LED power supply

Model/Parameter		
Mains input voltage range		220V to 240V AC RMS
Power factor λ		> 0,90 (typical 0,98) ³⁾
Efficiency at full load		88% typical
Overvoltage protection		4kV common mode 2kV differential
Input-output isolation		3,75kV AC RMS
Ambient temperature		-25°C to 50°C
Max. operating temperature		75°C
Moisture content		10 - 90% max. non-condensing
Trigger temperature		110°C resettable
Max. power output	Single tube	36 W
	Double tube	72 W
Output current tolerance		$\pm 5\%$
Total voltage across the LEDs		9V bis 54V
Residual ripple (current ripple)		$\leq 20\%$
Operating mode		constant power supply 700 mA
Dimmable		possible, on request
Dimensions (LxWxH)		(A1) 424mm x (B1) 30mm x (C1) 26,5mm
Weight		362g

Diagram of power supply unit



General Information

Model/Parameter	LED-WL-xF-LP-RE-600-Dxx	LED-WL-xF-LP-RE-1200-Dxx	LED-WL-xF-LP-RE-1500-Dxx
Light properties	Flicker-free light in comparison to conventional fluorescent tubes, no UV or IR radiation, directed light		
Protection degree	IP 66		
Protection class	SK II		
Degree of protection against damaging mechanical stress (IK code, degree of shock resistance)	IK08		
Ignition and inflammation protection class	F		
Warranty	2 years		
Energy saving	Up to 65% immediate reduction in electricity consumption		
Energy label	A++		
Mounting type	LED circuit boards mounted in a replaceable profile (LED-RE lamps). Power LED power supply, mounted with spacers in the housing.		
Conformity	EnVKV, EN 61347-1, EN 61347-2-13, IEC/EN 61000-3-2, IEC/EN 61000-3-3, IEC/EN 61547:2009, EN 55015:2006:2007 + A1, IEC/EN 61000-4-5, IEC/EN 62471-1 + IEC/TR 62471-2, DIN EN 60529, DIN EN 62031:2009-01, CE-conform, RoHS-conform, WEEE-conform, ENEC certified, REACH-conform, directive 2006/95/EG, directive 2011/65/EU, directive 2009/125/EG		

Suspension methods

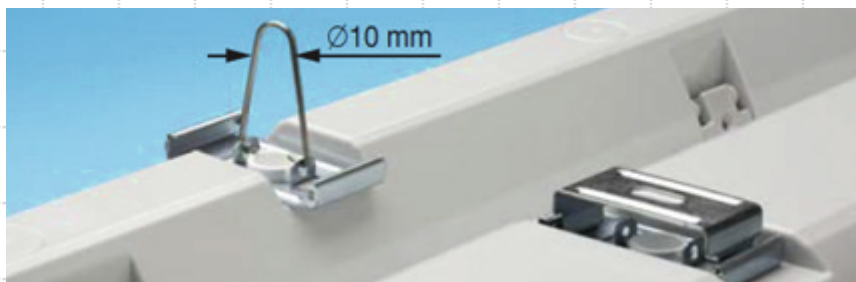


Image 1: steel hooks

- With steel hooks as standard accessories (Fig. 1)
- With steel eyebolts (10mm) - on request only (Fig. 2)
- Hanging the mounting plate during installation and/or repairs. (Fig. 3)
- The metal clip can be fitted with a screw to prevent easy opening. (Fig. 4)

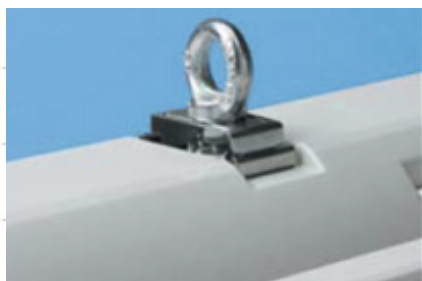


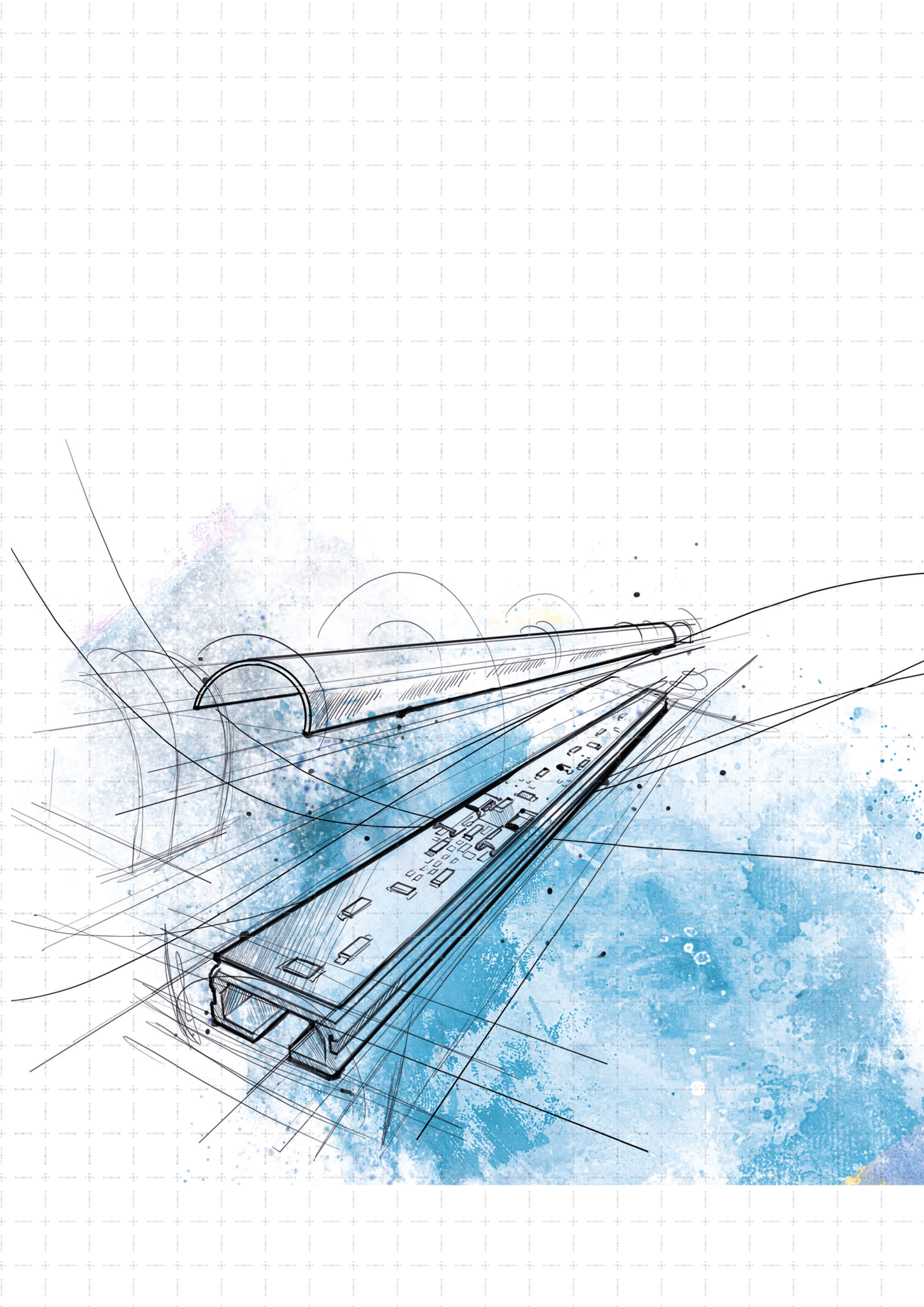
Image 2: steel eyebolts



Image 3: Hanging the mounting plate



Image 4: Metal clip



Article designations/article numbers

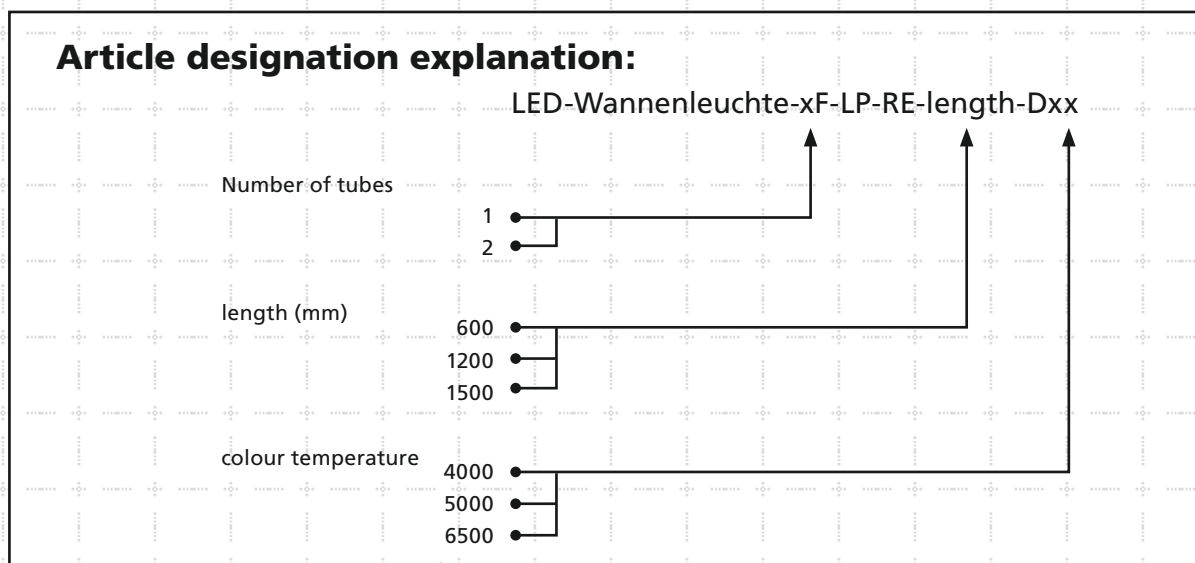
Single tubes LED-Luminaries

014111065 LED-Wannenleuchte-1F-LP-RE-600-1R-D50
014111066 LED-Wannenleuchte-1F-LP-RE-600-1R-D65
014111125 LED-Wannenleuchte-1F-LP-RE-1200-1R-D50
014111126 LED-Wannenleuchte-1F-LP-RE-1200-1R-D65
014111155 LED-Wannenleuchte-1F-LP-RE-1500-1R-D50
014111156 LED-Wannenleuchte-1F-LP-RE-1500-1R-D65
014112064 LED-Wannenleuchte-1F-LP-RE-600-2R-D40
014112065 LED-Wannenleuchte-1F-LP-RE-600-2R-D50
014112066 LED-Wannenleuchte-1F-LP-RE-600-2R-D65
014112124 LED-Wannenleuchte-1F-LP-RE-1200-2R-D40
014112125 LED-Wannenleuchte-1F-LP-RE-1200-2R-D50
014112126 LED-Wannenleuchte-1F-LP-RE-1200-2R-D65
014112154 LED-Wannenleuchte-1F-LP-RE-1500-2R-D40
014112155 LED-Wannenleuchte-1F-LP-RE-1500-2R-D50
014112156 LED-Wannenleuchte-1F-LP-RE-1500-2R-D65
014113064 LED-Wannenleuchte-1F-LP-RE-600-3R-D40
014113065 LED-Wannenleuchte-1F-LP-RE-600-3R-D50
014113066 LED-Wannenleuchte-1F-LP-RE-600-3R-D65
014113124 LED-Wannenleuchte-1F-LP-RE-1200-3R-D40
014113125 LED-Wannenleuchte-1F-LP-RE-1200-3R-D50
014113126 LED-Wannenleuchte-1F-LP-RE-1200-3R-D65
014113155 LED-Wannenleuchte-1F-LP-RE-1500-3R-D50
014113156 LED-Wannenleuchte-1F-LP-RE-1500-3R-D65

Double tubes LED-Luminaries

014121065 LED-Wannenleuchte-2F-LP-RE-600-1R-D50
014121066 LED-Wannenleuchte-2F-LP-RE-600-1R-D65
014121125 LED-Wannenleuchte-2F-LP-RE-1200-1R-D50
014121126 LED-Wannenleuchte-2F-LP-RE-1200-1R-D65
014121155 LED-Wannenleuchte-2F-LP-RE-1500-1R-D50
014121156 LED-Wannenleuchte-2F-LP-RE-1500-1R-D65
014122064 LED-Wannenleuchte-2F-LP-RE-600-2R-D40
014122065 LED-Wannenleuchte-2F-LP-RE-600-2R-D50
014122066 LED-Wannenleuchte-2F-LP-RE-600-2R-D65
014122124 LED-Wannenleuchte-2F-LP-RE-1200-2R-D40
014122125 LED-Wannenleuchte-2F-LP-RE-1200-2R-D50
014122126 LED-Wannenleuchte-2F-LP-RE-1200-2R-D65
014122155 LED-Wannenleuchte-2F-LP-RE-1500-2R-D50
014122156 LED-Wannenleuchte-2F-LP-RE-1500-2R-D65
014123064 LED-Wannenleuchte-2F-LP-RE-600-3R-D40
014123065 LED-Wannenleuchte-2F-LP-RE-600-3R-D50
014123066 LED-Wannenleuchte-2F-LP-RE-600-3R-D65
014123124 LED-Wannenleuchte-2F-LP-RE-1200-3R-D40
014123125 LED-Wannenleuchte-2F-LP-RE-1200-3R-D50
014123126 LED-Wannenleuchte-2F-LP-RE-1200-3R-D65
014123154 LED-Wannenleuchte-2F-LP-RE-1500-3R-D40
014123155 LED-Wannenleuchte-2F-LP-RE-1500-3R-D50
014123156 LED-Wannenleuchte-2F-LP-RE-1500-3R-D65

Further lightcolours and lengths on request.



Distributed by:



The contents of this product data sheet are subject to errors and technical modifications.
© Plättner Elektronik GmbH 2017

